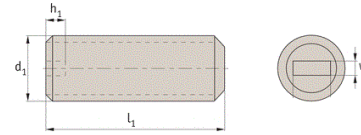


## DIN 551 Flat Point Socket Setscrews



DIN 551 Flat Point Socket Setscrews							
Thread - d1	M3	M4	M5	M6	M8	M10	M12
w	0.4	0.64	0.89	1.00	1.20	1.60	2.00
h	1.05	1.52	1.63	2.00	2.50	3.00	2.80
Current Lengths Available							
↑   ↓	8	3	6	5	6	6	12
	To	To	To	To	To	To	&
	20	40	70	80	80	80	25

Please Enquire For Required Length

Material: Nylon 66

INFORMATION AND DRAWINGS PROVIDED ARE FOR REFERENCE ONLY